

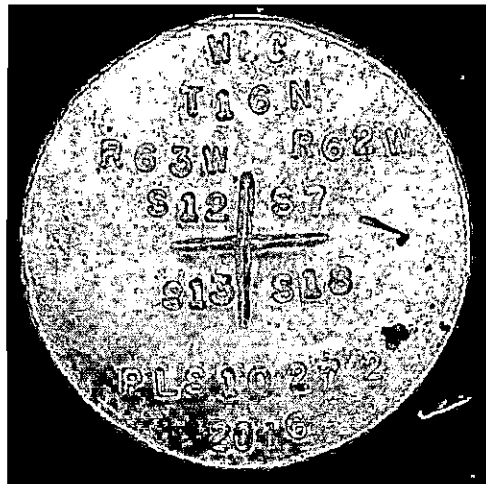
State of Wyoming Corner Record

(In compliance with the *CORNER PERPETUATION AND FILING ACT*, Wyoming Statutes, 1997 Section 33-29-140 et. seq., and the Rules and Regulations of the Board of Professional Engineers and Professional Land Surveyors)

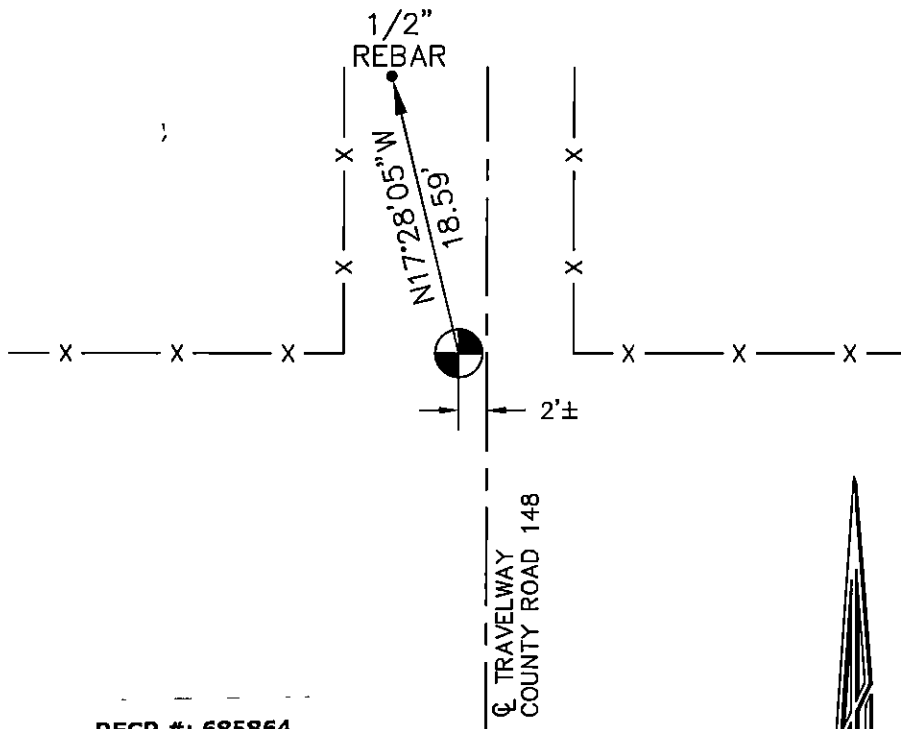
Reverse side of this form may be used if more space is needed.

Record of original survey and citation of source of historical information (if corner is lost or obliterated). Description of corner monumentation evidence found and/or monument and accessories established to perpetuate the location of this corner. Sketch of relative location of monument, accessories, and reference points with course and distance to adjacent corner(s) (if determined in this survey). Method and rationale for reestablishment of lost or obliterated corner.

FND: 1/2" rebar at 18" below grade and did not except for this survey. Had parole evidence from two landowners, one commented on intent of ancient fence lines and the other landowner stressed location of roads being built on section lines. Also finding local practice as holding county road intersections and fence lines, no record of where this rebar came from. Set 2 1/2" Aluminum cap on a 5/8" x 24" rebar at 12" below grade, midpoint between fence corners both sides county road 148. Did searches to the north along the Range line, recovered nothing and calc's from recovered corners along the Standard Parallel opted this to be the best alternative.



SEE OTHER SIDE FOR SECTION BREAKDOWN.



NO SCALE



RECP #: 685864
 RECORDED 6/10/2016 AT 12:07 PM BK# 2504 PG# 320
 Debra K. Lathrop, CLERK OF LARAMIE COUNTY, WY PAGE 1 OF 2

NAD 83/2011
 LAT- 41°21'37.5"N
 LONG- 104°22'05.2"W
 LARAMIE COUNTY, WYO

BEARINGS AND DISTANCES ARE GRID.
 WYO. STATE PLANE, EAST ZONE.

Date of Field Work: 05-26-16

Office Reference: W.O.# 16023-02 FB# 1183 PG# 40 PT# 2015

Cross Index Plat

	1	2	3	4	5	6	7	8	9	10	11	12	13	14	15	16	17	18	19	20	21	22	23	24	25	
A	+	+	+	+	+	+	+	+	+	+	+	+	+	+	+	+	+	+	+	+	+	+	+	+	+	A
B	+	+	+	+	+	+	+	+	+	+	+	+	+	+	+	+	+	+	+	+	+	+	+	+	+	B
C	+	6	+	+	5	+	+	4	+	+	3	+	+	2	+	+	1	+	+	+	+	+	+	+	+	C
D	+	+	+	+	+	+	+	+	+	+	+	+	+	+	+	+	+	+	+	+	+	+	+	+	+	D
E	+	+	+	+	+	+	+	+	+	+	+	+	+	+	+	+	+	+	+	+	+	+	+	+	+	E
F	+	+	+	+	+	+	+	+	+	+	+	+	+	+	+	+	+	+	+	+	+	+	+	+	+	F
G	+	7	+	+	8	+	+	9	+	+	10	+	+	11	+	+	12	+	+	+	+	+	+	+	+	G
H	+	+	+	+	+	+	+	+	+	+	+	+	+	+	+	+	+	+	+	+	+	+	+	+	+	H
J	+	+	+	+	+	+	+	+	+	+	+	+	+	+	+	+	+	+	+	+	+	+	+	+	+	J
K	+	+	+	+	+	+	+	+	+	+	+	+	+	+	+	+	+	+	+	+	+	+	+	+	+	K
L	+	18	+	+	17	+	+	16	+	+	15	+	+	14	+	+	13	+	+	+	+	+	+	+	+	L
M	+	+	+	+	+	+	+	+	+	+	+	+	+	+	+	+	+	+	+	+	+	+	+	+	+	M
N	+	+	+	+	+	+	+	+	+	+	+	+	+	+	+	+	+	+	+	+	+	+	+	+	+	N
O	+	+	+	+	+	+	+	+	+	+	+	+	+	+	+	+	+	+	+	+	+	+	+	+	+	O
P	+	19	+	+	20	+	+	21	+	+	22	+	+	23	+	+	24	+	+	+	+	+	+	+	+	P
Q	+	+	+	+	+	+	+	+	+	+	+	+	+	+	+	+	+	+	+	+	+	+	+	+	+	Q
R	+	+	+	+	+	+	+	+	+	+	+	+	+	+	+	+	+	+	+	+	+	+	+	+	+	R
S	+	+	+	+	+	+	+	+	+	+	+	+	+	+	+	+	+	+	+	+	+	+	+	+	+	S
T	+	30	+	+	29	+	+	28	+	+	27	+	+	26	+	+	25	+	+	+	+	+	+	+	+	T
U	+	+	+	+	+	+	+	+	+	+	+	+	+	+	+	+	+	+	+	+	+	+	+	+	+	U
V	+	+	+	+	+	+	+	+	+	+	+	+	+	+	+	+	+	+	+	+	+	+	+	+	+	V
W	+	+	+	+	+	+	+	+	+	+	+	+	+	+	+	+	+	+	+	+	+	+	+	+	+	W
X	+	31	+	+	32	+	+	33	+	+	34	+	+	35	+	+	36	+	+	+	+	+	+	+	+	X
Y	+	+	+	+	+	+	+	+	+	+	+	+	+	+	+	+	+	+	+	+	+	+	+	+	+	Y
Z	+	+	+	+	+	+	+	+	+	+	+	+	+	+	+	+	+	+	+	+	+	+	+	+	+	Z

Firm/Agency, Address

PAUL R. SVENSON
 WLC
 200 PRONGHORN
 CASPER, WY 82601
 Telephone Number: 307-266-2524

This corner record was prepared by me or under my direction and supervision.

SEAL & SIGNATURE



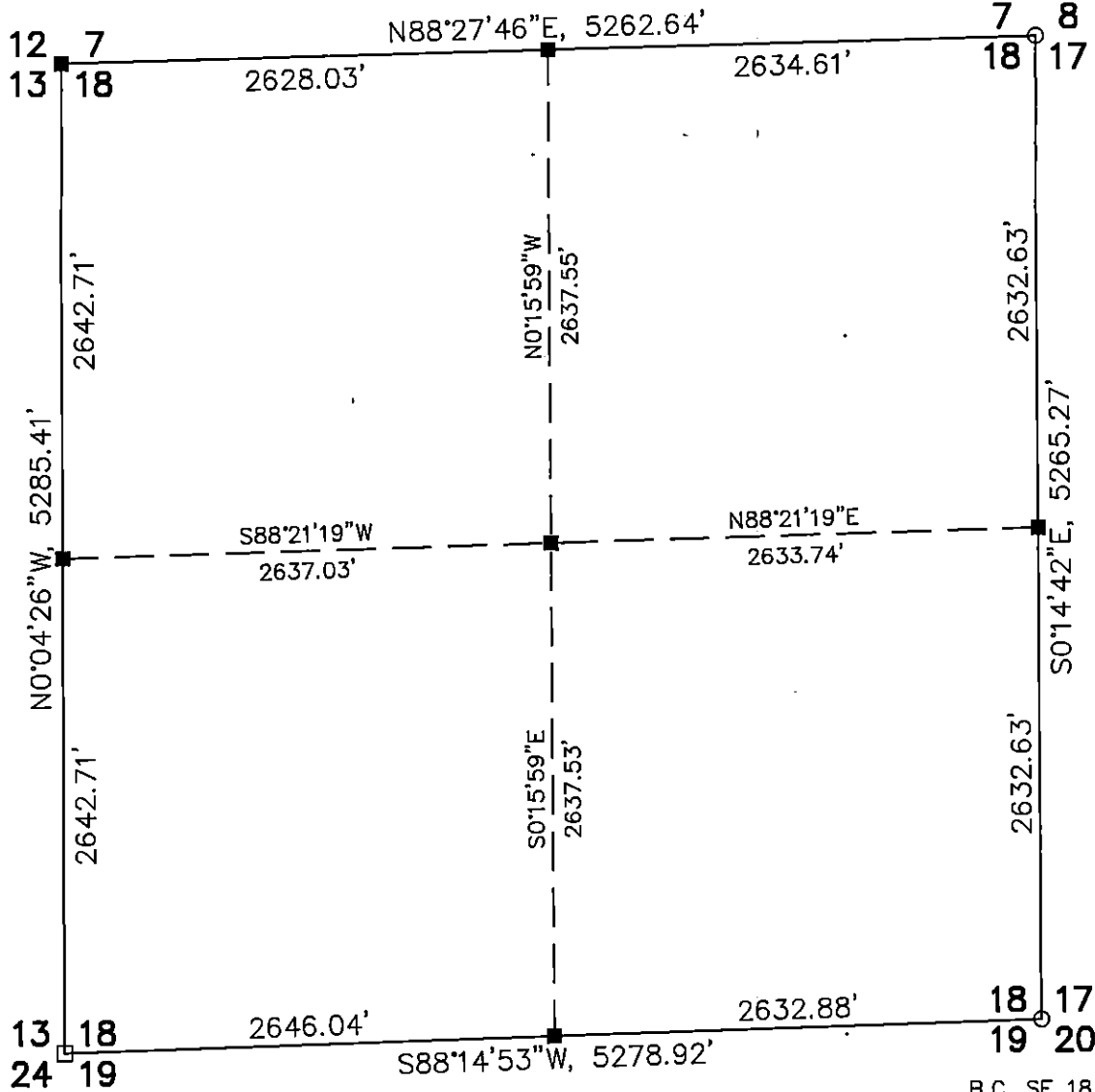
Corner Name Northwest Corner Section 18, T 16 N, R 62 W, 6th P.M.

Cross-Index No.: J-1

County: Laramie, Wyoming

SBRPEPLS/PLSW: March 1994; PLSW January 1998

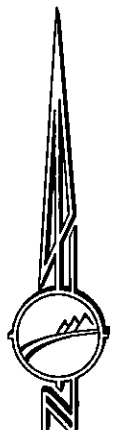
B.C. NE 18 REFER TO
LS 2927
COR. REC. 2009
REC.# 518599



B.C. SE 18 REFER TO
LS 2927
COR. REC. 2009
REC.# 518598



REC #: 685864
RECORDED 6/10/2016 AT 12:07 PM BK# 2504 PG# 320A
Debra K. Lathrop, CLERK OF LARAMIE COUNTY, WY PAGE 2 OF 2



NO SCALE